

SpeedWeb

Instantly web-enable your existing Speedware V7 applications

SpeedWeb is a new tool that allows Speedware V7 customers to instantly web-enable their applications.

The Challenge . . . Extend the Life and Value of Speedware V7 Applications

Your Speedware V7 applications have served your business reliably for years. However, you know that web-enablement and graphical interface enhancements can significantly increase the life and value of these powerful applications.

Whether you decide to homestead on your HP e3000 platform or migrate to a new environment, you almost certainly want to breathe new life into your Speedware applications.

In particular, companies who plan to migrate to a new platform are especially interested in extending their applications to the web with a refreshed interface. After all, when you've gone through the effort and expense of a migration, it makes sense to step beyond your basic character-based applications.

The Solution . . . SpeedWeb

SpeedWeb instantly web-enables existing Speedware V7 applications — without having to modify the application code at all.

Users will be able to access Speedware applications without a terminal or an emulator, using their web browser. They will continue to benefit from the same user-application interactivity they expect from Speedware — while enjoying an enhanced graphical user interface.

Improve the Look of Your Applications

If the time is right to improve the look of your existing character-based applications, SpeedWeb is the easiest and most affordable way to go. The possibilities are endless: modify your applications to match your corporate branding efforts, add images, buttons and menus. A modern, intuitive graphical interface can go a long way in establishing your company's professional image.

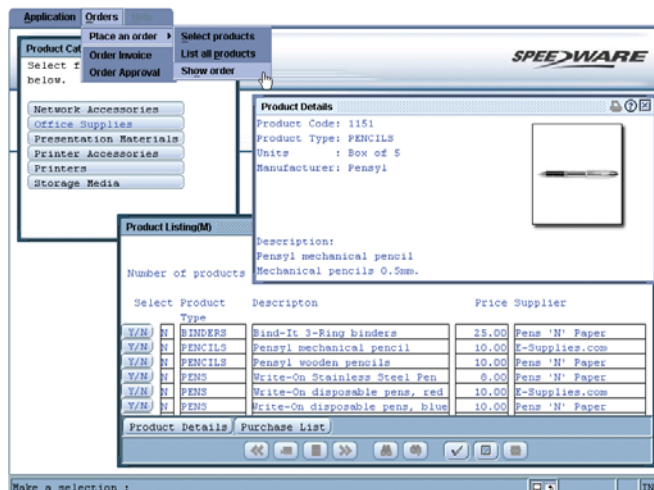
Minimize Equipment Purchase

Terminal emulator licenses can be very expensive. Relieve budget strain with SpeedWeb. Its Java-based technology means that you can access your applications from any location — all you need is a web browser and you're ready to go.

New Features, Same Functionality

With SpeedWeb, applications can be accessed using a combination of mouse and keyboard: left-click selection, right-click menus, buttons, pull-down menus, tool tips and a navigation bar. Users who prefer navigating with the keyboard

can continue to do so.

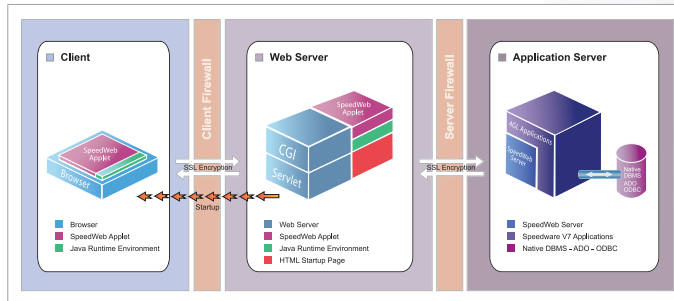


SpeedWeb provides instant web-enabling, plus extra features to enhance the look of your applications

SpeedWeb Features

- **Ease of use**
SpeedWeb's Java-based engine allows access to applications through the Internet — meaning users need no new training in web technology.
- **Automatic web-enabling of V7 apps**
Screens, reports, text sections, function keys and pull-down menus are all displayed graphically, without the need for any code modification.
- **Enhance apps with images**
With SpeedWeb, images and graphical icons can be used to represent database elements.
- **Customizable GUI**
Select the application's colors: foreground, background, fields, text, branches and more.
- **Flexible interface**
SpeedWeb can be used in the standard familiar mode using function keys, or with an enhanced graphical look.
- **Ease of navigation**
Navigate using buttons, pull-down menus, context-sensitive menu panels and right-click menus.

SpeedWeb Run-Time Environment



End users launch SpeedWeb applications from their web browsers. Java components are automatically deployed if they are not already installed.

Environment

SpeedWeb is designed to automatically web-enable existing Speedware V7 applications.

Platforms

HP-UX, MPE/iX and Windows.

Databases

Supports native access to Oracle, Microsoft SQL Server, TurboImage/XL, HP Eloquence, Omnidex, Omni-Access, DB2, Informix, Sybase, KSAM, CISAM, flat files, and a variety of other file systems through ADO and ODBC.

Benefits

- **Maximize the value of your applications**
Whether you are ready to migrate or prefer to homestead on your current HP e3000 system, SpeedWeb will enhance, extend the life — and ultimately the value of your Speedware V7 applications.
- **Save the cost of terminal emulators**
SpeedWeb's Java-based technology means you don't have to use costly emulators.
- **Enjoy the same functionality with a new look**
SpeedWeb supports both keyboard-entry mode and mouse navigation.

About Speedware

Speedware has been dedicated to helping companies modernize their business applications for over 15 years and enjoys a 100% project success rate. The company specializes in developing end-to-end modernization solutions that allow industry and government leaders to increase their business agility and reduce their operational costs. Speedware has been a leading provider of enterprise software solutions since 1976, offering a complete suite of legacy modernization, migration and application portfolio management solutions, business intelligence tools and application development solutions.

Speedware
6380 Cote de Liesse Rd., Suite 110
St. Laurent, Quebec
Canada H4T 1E3
Tel: (514) 747.7007
North America: 1.888.GET.SPEED
From France, Germany, UK: 00 800 361 67 82 0
From Australia: 0011 800 361 6782 0
E-mail: info@speedware.com
www.speedware.com

©2010 Speedware Inc.
Printed in Canada
SPE-602WEBAPR20-E2